

To order the HPV test, call 1-877-803-1010.



Footnotes

1. Goldstein A, Understanding Pap smears and HPV infections...how to protect yourself. Available at http://www.ourgyn.com/article_retrieve.php?articleid=60. Accessed August, 2003.
2. Saslow D, Runowicz C, Solomon D, et al. American Cancer Society guideline for early detection of cervical neoplasia and cancer. *CA Cancer J Clin*. 2002;52:342-362.
3. Nobbenhuis MAE, Wallboomers JMM, Helmerhorst TJM, et al. Relation of human papillomavirus status to cervical lesions and consequences for cervical cancer screening: a prospective study. *Lancet*. 1999;354:20-25.
4. Sellors J, Mahony J, Kaczorowski J, et al. Prevalence and predictors of human papillomavirus infection in women in Ontario, Canada. *Can Med Assoc J*. 2000; 163:503.
5. National Cancer Institute. *SEER Cancer Statistics Review, 1973-1997*. Ries LAG, Eisner MP, Kosary CL, et al. ed. Bethesda, Md: National Cancer Institute; 2000. Available at <http://seer.cancer.gov/csr/1973-1997>.
6. Solomon D, Schiffman M, Rarone R, et al. Comparison of three management strategies for patients with atypical squamous cells of undetermined significance: baseline results from a randomized trial. *J Natl Cancer Inst*. 2001;93:923-299.
7. Sherman M, Lorincz A, Scott D, et al. Baseline cytology, human papillomavirus testing, and risk for cervical neoplasia: a 10-year cohort analysis. *J Natl Cancer Inst*. 2003;95:46-52.
8. Clavel C, Masure M, Bory J-P, et al. Human Papillomavirus testing in primary screening for the detection of high-grade cervical lesions: a study of 7932 women. *Brit J Cancer*. 2001;89(12):2616-1623.
9. ACOG Committee on Practice Bulletins. ACOG Practice Bulletin: clinical management guidelines for obstetrician-gynecologists. Number 45, August 2003. Cervical cytology screening (replaces committee opinion 152, March 1995.) *Obstet Gynecol*. 2003;102:417-427.
10. American Society for Colposcopy and Cervical Pathology. 2006 Consensus Guidelines for the Management for Women with Abnormal Cervical Screening Tests. *J Lower Genital Tract Disease*. 2007;11(4):201-222.
11. Wright T, Schiffman M, Solomon D, et al. Interim guidance for the use of human papillomavirus DNA testing as an adjunct to cervical cytology for screening. *Obstet Gynecol*. 2004;103(2):304-309.

The HPV test



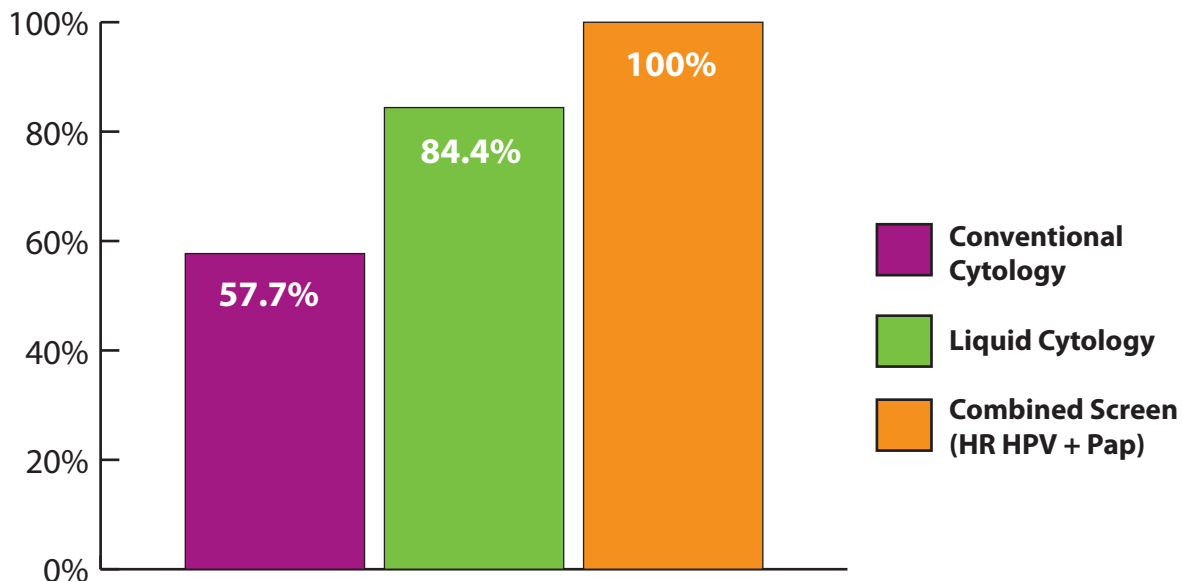
Why the Pap alone isn't enough for women age 30 and older

A woman infected with HPV (Human Papillomavirus) in her teenage years may not exhibit symptoms until she is in her 30s or 40s.¹ That's when her risk for cervical cancer is at its highest. Combining the HPV test with the Pap test can help ensure the disease is caught and treated early.

How combined screening can help

- If a woman receives a negative result for both tests, it decreases the likelihood that she will develop high-grade cervical disease or cancer for three years, assuming there is no other change in her risk factors.²
- **When combined with the Pap, the HPV test provides a greater than 99 percent negative predictive value.** That means negative test results can be reported with greater than 99 percent confidence that:
 - Cervical Intraepithelial Neoplasia (CIN) 2/3 and cancer is not present.⁶
 - The patient is not at current risk of developing cervical cancer within the next several years.⁷
- **Combined testing is more sensitive (100 percent) for HSIL than a Pap test alone, providing more accurate results.⁸**

High-risk HPV + Pap test sensitivity for detection of HSIL



Clavel C, et al. *Brit J Cancer*, 2001;80:1616-1623

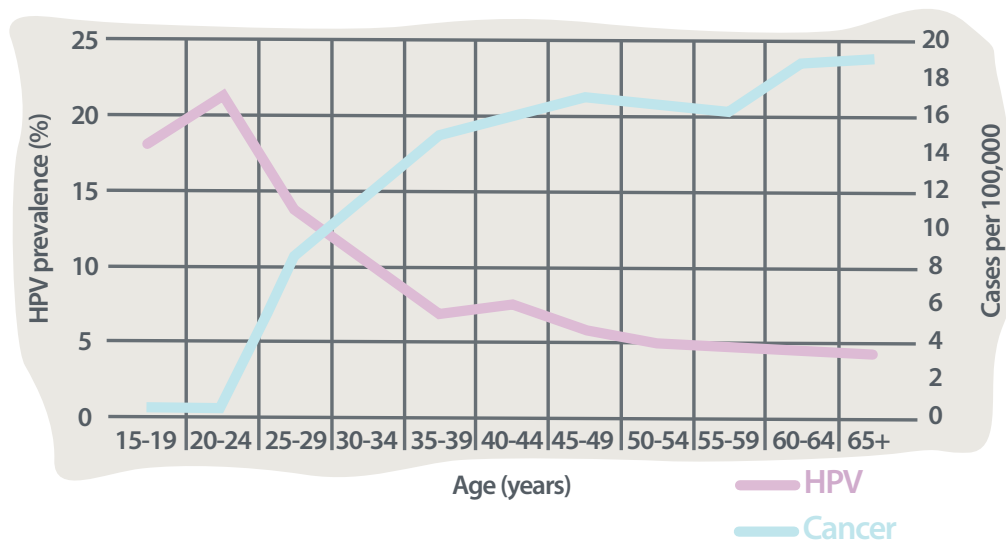
(continued)

The HPV test (continued)

Important HPV facts

- The risk of cervical cancer and persistent infection is higher for a woman age 30 or older who tests positive for HPV.²
- Persistent infection with HPV can lead to the development of abnormal cells (CIN3) and cervical cancer.³

HPV Prevalence and Incidence of Cervical Cancer by Age^{4,5}



The HPV test (continued)

Image assisted thin prep with HPV
Test Code: 51181

Who recommends combination screening?

- The American Cancer Society (ACS)²
- The American College of Obstetricians and Gynecologists (ACOG)⁹
- The American Society for Colposcopy and Cervical Pathology (ASCCP)¹⁰

All three organizations still recommend annual gynecologic exams, including pelvic exams.

How do I manage patients based on combined screening?

